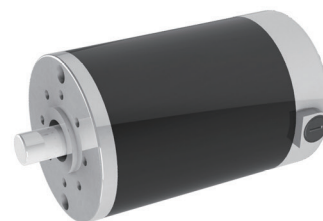


80ZYT Series

General Specification

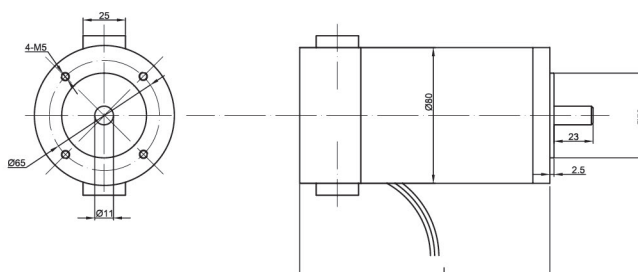
Voltage Range 电压范围	12 & 24V dc (48V also available)
Power Output Range 输出功率范围	90 ~ 150 W
Speed Range 转速范围	up to 9,000 rpm
Operational Temperature 操作温度	-20°C ~ +40°C
Insulation Class 绝缘等级	F (consult us for class B)
Bear Type 轴承类型	High quality ball bearings
Housing Type 机壳种类	Closed (ventilated also available)



Performance Data

Part Number 型号	Units	80ZYT122-24V	80ZYT135-24V	80ZYT-160-24V	80ZYT-180-24V	80ZYT175-24V
Voltage 电压	V	24	24	24	24	24
Rated Power 额定功率	W	54	106	60	88	201
Rated Speed 额定转速	rpm	1200	2900	1430	1025	3100
Rated Torque 额定扭矩	mNm	430	350	0.4	0.82	620
Rated Current 额定电流	A	3.5	5.8	3.5	5.5	6
No load Speed 空载转速	rpm	1600	3200	1650	1300	3500
Length 长度	mm	122	135	160	180	175

Dimensions in mm



90ZYT Series

General Specification

Voltage Range 电压范围	12 & 24V dc (48V also available)
Power Output Range 输出功率范围	150 ~ 300 W
Speed Range 转速范围	up to 9,000 rpm
Operational Temperature 操作温度	-20°C ~ +40°C
Insulation Class 绝缘等级	F (consult us for class B)
Bear Type 轴承类型	High quality ball bearings
Housing Type 机壳种类	Closed (ventilated also available)



Performance Data

Part Number 型号	Units	90ZYT155-12V	90ZYT199-12V	90ZYT155-24V	90ZYT199-24V	90ZYT152-24V
Voltage 电压	V	12	12	24	24	24
Rated Power 额定功率	W	250	150	250	150	95
Rated Speed 额定转速	rpm	4750	1200	4750	1200	1055
Rated Torque 额定扭矩	mNm	400	1200	500	1200	0.86
Rated Current 额定电流	A	23	23	13.8	11.5	5.5
No load Speed 空载转速	rpm	5540	1500	5100	1600	1300
Length 长度	mm	155	199	155	199	152

Dimensions in mm

