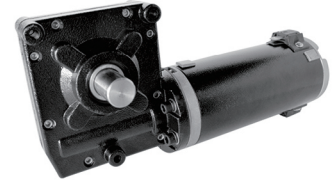


# Worm Wheel Geared Motor 蜗轮蜗杆减速机

## WG4 Series

### General Specification

Gearbox Housing 齿轮箱壳体	Ruggedised Die-cast Aluminium 强化压铸铝
Worm Gear Material 蜗轮蜗杆材料	Bronze, steel or plastic 青铜, 钢, 塑料
Lubrication 润滑方式	Grease lubricated & sealed for life 油脂润滑并且密封
Bearing Type 轴承类型	High quality ball bearings 高质量滚珠轴承
Insulation Class 绝缘等级	Class F (Optional: Class B) Class F (Class B 可供选择)
Brush Type 碳刷类型	Integral or removable 一体型或可替换型
Ambient Operating Temperature 环境工作温度	-20°C to +40°C



### Performance Data

Motor Size 电机尺寸	73ZYT,80ZYT,90ZYT	73ZYT,80ZYT,90ZYT	73ZYT,80ZYT,90ZYT	73ZYT,80ZYT,90ZYT
Worm Wheel Material 蜗轮材料	Delrin, Bronze	Delrin, Bronze	Delrin, Bronze	Delrin, Bronze
Gear Ratio 减速比	12.5:1	25:1	30:1	50:1
Brake Type 刹车盘类型	ERB, MRB	ERB, MRB	ERB, MRB	ERB, MRB
Output Shaft 输出轴	Customised	Customised	Customised	Customised

### Dimensions in mm

