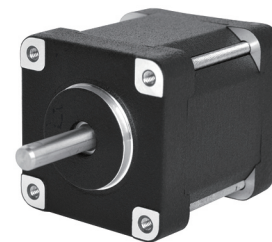


# 39HSM Series (0.9 degree)

## General Specification

Step Angle Accuracy 步距角精度	± 5% ( full step, no load )
Resistance Accuracy 电阻公差	± 10%
Inductance Accuracy 电感公差	± 20%
Temperature Rise 温升	80°C max ( rated current, 2 phase on )
Ambient Temperature 工作环境温度	-20°C ~ +50°C
Insulation Resistance 绝缘电阻	100MΩ min, 500VDC
Dielectric Strength 介电强度	500VDC for one minute
Shaft Radial Play 径向跳动	0.02mm max ( 450g load )
Shaft Axial Play 轴向游隙	0.08mm max ( 450g load )
Max. Radial Force 最大径向力	28N ( 20mm from the flange )
Max. Axial Force 最大轴向力	10N
Rotation 转向	CCW
Insulation Class 绝缘等级	B ( 130°C )



## Performance Data

part number 型号	39HS020MF10JX-01	39HS022MF300X-01	39HS024MF23JX-01	39HS026MF220X-01
length(mm) 长度	20	22	24	26
step angle deg 步距角	0.9°	0.9°	0.9°	0.9°
resistance (Ω) 电阻	10	3	23	2.2
current (A) 电流	0.5	1.2	0.48	1
voltage 电压	5	3.6	11.04	2.2
holding torque (N.cm) 保持力矩	8	8.2	14	12
lead wires /pins 引出线 / 针脚	4	4	4	4
rotor inertia ( g.cm <sup>2</sup> ) 转动惯量	10	12	13	14
weight ( kg ) 重量	0.13	0.135	0.14	0.13

part number 型号	39HS027MF11JX-01	39HS033MF12JX-01	39HS037MS26JX-01	39HS039MF14JB-01
length(mm) 长度	27	33	37	39
step angle deg 步距角	0.9°	0.9°	0.9°	0.9°
resistance (Ω) 电阻	11	12	26	14
current (A) 电流	0.5	0.6	0.4	0.5
voltage 电压	5.5	7.2	10.4	7
holding torque (N.cm) 保持力矩	13	20	18	20
lead wires /pins 引出线 / 针脚	4	4	6	4
rotor inertia ( g.cm <sup>2</sup> ) 转动惯量	14	17	27	29
weight ( kg ) 重量	0.13	0.18	0.22	0.26

## Dimensions in mm

