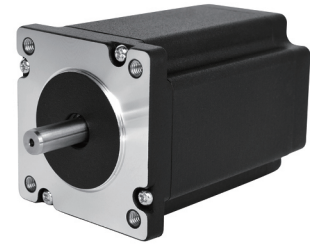


# 60HSD Series (1.8 degree)

## General Specification

Step Angle Accuracy 步距角精度	± 5% ( full step, no load )
Resistance Accuracy 电阻公差	± 10%
Inductance Accuracy 电感公差	± 20%
Temperature Rise 温升	80°C max ( rated current, 2 phase on )
Ambient Temperature 工作环境温度	-20°C ~ +50°C
Insulation Resistance 绝缘电阻	100MΩ min, 500VDC
Dielectric Strength 介电强度	500VDC for one minute
Shaft Radial Play 径向跳动	0.02mm max ( 450g load )
Shaft Axial Play 轴向游隙	0.08mm max ( 450g load )
Max. Radial Force 最大径向力	75N ( 20mm from the flange )
Max. Axial Force 最大轴向力	15N
Rotation 转向	CCW
Insulation Class 绝缘等级	B (130°C)



## Performance Data

part number 型号	60HS044DF045X-01	60HS056DE210D-01	60HS066DS210B-01	60HS076DF100X-01
length(mm) 长度	44	56	66	76
step angle deg 步距角	1.8°	1.8°	1.8°	1.8°
resistance (Ω) 电阻	0.45	2.1	2.1	1
current (A) 电流	4.2	2	2.8	3
voltage 电压	1.89	4.2	4	3
holding torque (N.cm) 保持力矩	106	120	210	210
lead wires /pins 引出线 / 针脚	4	8	6	4
rotor inertia ( g.cm <sup>2</sup> ) 转动惯量	280	400	570	720
weight ( kg ) 重量	0.62	0.8	1.02	1.18

part number 型号	60HS078DE076X-01	60HS080DF075X-01	60HS088DE130X-01	60HS100DE100X-01
length(mm) 长度	78	80	88	100
step angle deg 步距角	1.8°	1.8°	1.8°	1.8°
resistance (Ω) 电阻	0.76	0.75	1.3	1
current (A) 电流	3.5	4	3	3.5
voltage 电压	2.7	3	3.9	3.5
holding torque (N.cm) 保持力矩	208	200	215	320
lead wires /pins 引出线 / 针脚	8	4	8	8
rotor inertia ( g.cm <sup>2</sup> ) 转动惯量	750	800	930	1200
weight ( kg ) 重量	1.2	1.3	1.48	1.65

## Dimensions in mm

