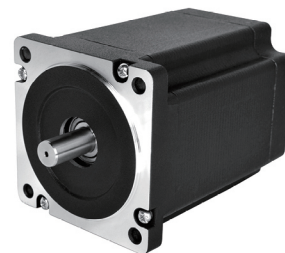


# 86HSD Series (1.8 degree)

## General Specification

Step Angle Accuracy 步距角精度	± 5% ( full step, no load )
Resistance Accuracy 电阻公差	± 10%
Inductance Accuracy 电感公差	± 20%
Temperature Rise 温升	80°C max ( rated current, 2 phase on )
Ambient Temperature 工作环境温度	-20°C ~ +50°C
Insulation Resistance 绝缘电阻	100MΩ min, 500VDC
Dielectric Strength 介电强度	500VDC for one minute
Shaft Radial Play 径向跳动	0.02mm max ( 450g load )
Shaft Axial Play 轴向游隙	0.08mm max ( 450g load )
Max. Radial Force 最大径向力	75N ( 20mm from the flange )
Max. Axial Force 最大轴向力	15N
Rotation 转向	CCW
Insulation Class 绝缘等级	B (130°C )



## Performance Data

part number 型号	86HS065DE034X-01	86HS066DE048X-01	86HS078DF042X-01	86HS080DE075X-01	86HS090DF075X-01
length(mm) 长度	65	66	78	80	90
step angle deg 步距角	1.8°	1.8°	1.8°	1.8°	1.8°
resistance (Ω) 电阻	0.34	0.48	0.42	0.75	0.75
current (A) 电流	5	4.5	5.5	4	4
voltage 电压	1.7	2.16	2.31	3	3
holding torque (N.cm) 保持力矩	290	220	500	460	600
lead wires /pins 引出线 / 针脚	8	8	4	8	4
rotor inertia ( g.cm <sup>2</sup> ) 转动惯量	1400	1500	1850	1900	2300
weight ( kg ) 重量	1.7	1.9	2.05	2.1	2.4

part number 型号	86HS096DF130X-01	86HS114DE100X-01	86HS118DE035X-01	86HS120DE100X-01	86HS150DE085X-01
length(mm) 长度	96	114	118	120	150
step angle deg 步距角	1.8°	1.8°	1.8°	1.8°	1.8°
resistance (Ω) 电阻	1.3	1	0.35	1	0.85
current (A) 电流	2.4	4	7.1	4.5	7
voltage 电压	3.12	4	2.485	4.5	5.95
holding torque (N.cm) 保持力矩	450	420	607	800	1200
lead wires /pins 引出线 / 针脚	4	8	8	8	8
rotor inertia ( g.cm <sup>2</sup> ) 转动惯量	2700	3200	3500	3800	4500
weight ( kg ) 重量	2.8	3.15	3.3	3.5	4.2

## Dimensions in mm

