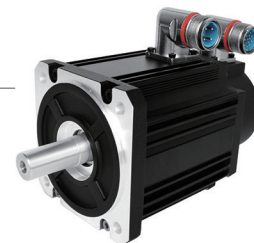


RE Series (90mm)

Performance Data

Model	Units	90S02430A3EMRD
Poles 极对数	/	4P
Rated Voltage 额定电压	VAC	220
Rated Power 额定功率	W	750
Rated Speed 额定转速	rpm	3000
Maximum Speed 最大转速	rpm	6000
Rated Torque 额定力矩	N.m	2.39
Maximum Torque 最大力矩	N.m	7.17
Rated Current 额定电流	A	2.4
Maximum Current 最大电流	A	7.2
Torque Coefficient 扭矩常数	N.m/A	1.100
Rotor Inertia 转子惯量	Kg*m ²	1.82*10 ⁻⁴
Insulation Class 热绝缘等级	Class	F
Safety Class 防护等级	/	IP65
Encoder Type 编码器类型	/	2500ppr incremental encoder
Environment 运行环境	/	-20℃ to 50℃ humidity < 90%
Weight 重量	Kg	3.3
Length 长度	mm	138



Dimensions in mm

