

POWER YOUR MOTION

CERTIFICATE



3X Motion Technologies CO.,LTD

Address: Building 5, 218 FuMin Road, LuCheng Changzhou

Email : info@3xmotion.net

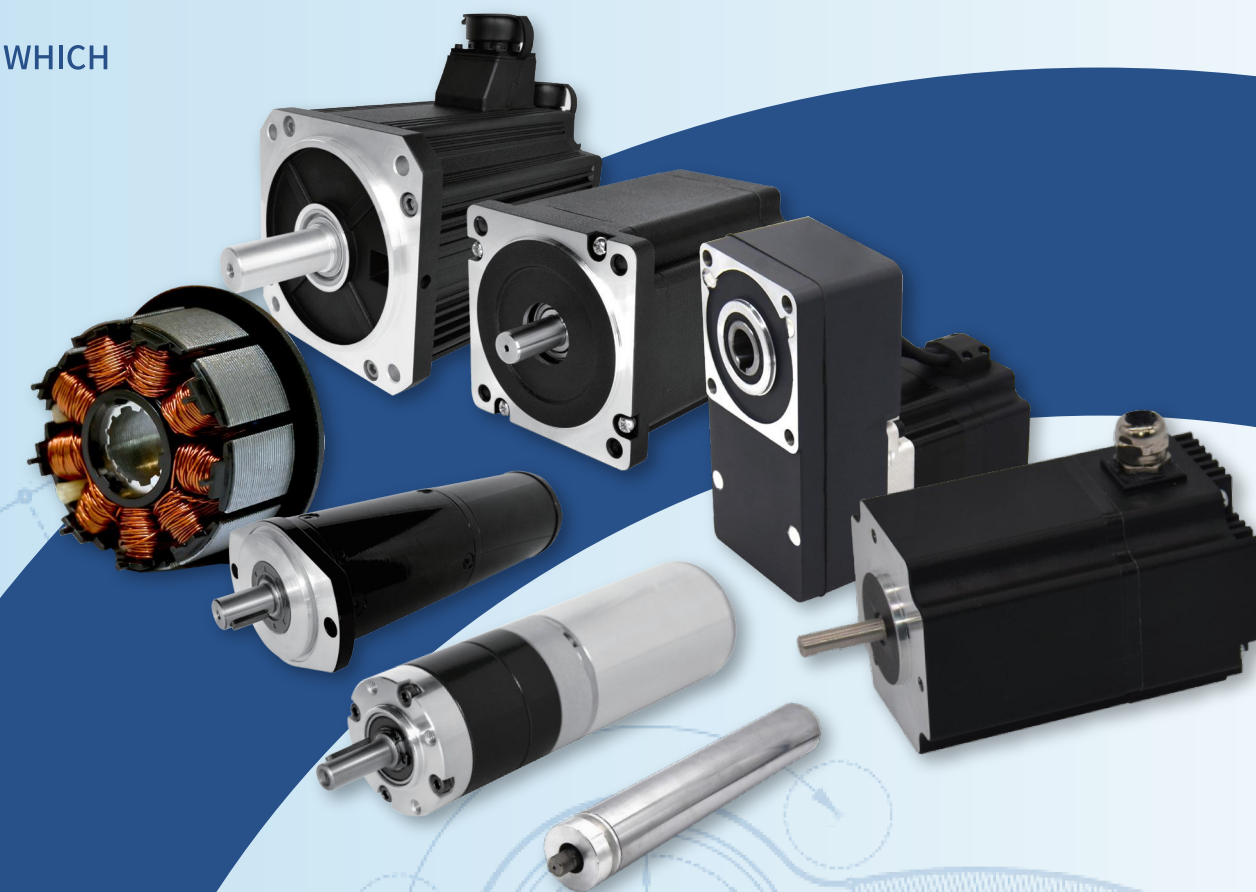


www.3xmotion.com



POWER YOUR MOTION

PROFESSIONAL MOTOR MANUFACTURER WHICH
CAN PROVIDE A FULL RANGE
OF MOTION CONTROL SOLUTIONS



COMPANY PROFILE

Established in 2002, 3X Motion Technologies Co., Ltd. in focus on motor’ s design, development and production for more than 20years, is a leading motor provider for motion control solutions.

3x Motion can supply and customize a variety of high-quality products including hybrid stepper motor, brushless DC motor, brushed DC motor, servo motor and DC geared motor according to customer requirements.

The company has more than 300 employees worldwide, the current factory covers an area of 10,000 m2, the new plant construction will be completed in January 2024, the total area of the park will be more than 30,000 m². In 2022, the company's sales increased under the influence of COVID 19, reaching \$55 million.

Our company has ISO9001, 14001,45001 certification, IATF16949 certification and a full range of products CE certification, and can provide product UL certification according to customer requirements.

3X Motion Technologies Co., Ltd. is a high-tech enterprise in Jiangsu Province of China, with more than 50 patents. The products of 3X Motion are widely used in the field of automation, logistics transmission, new energy industry, industrial applications and medical fields etc. In addition to motors we can also provide integrated motion solutions according to customer needs.

Our products meet IP67 rating and have excellent UV and corrosion resistance. Our motors also have UL and CE certifications. And we also provide long - term warranty and after - sales service.

3X Motion with energy-saving, efficient, intelligent products and concepts, provide customers with green intelligent integrated products, become your trusted partner.



OUR HISTORY



APPLICATIONS

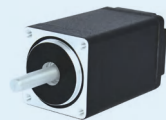


PRODUCT MENU - STEPPER MOTOR

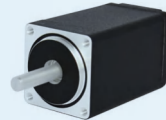
Hybrid Stepper Motors

Step Angle 0.9° or 1.8°
Three-phase
NEMA 8 ~ NEMA36
Precise torque frequency curve

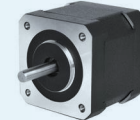
20HSD



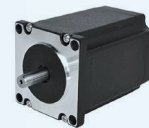
28 HSD



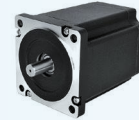
42 HSD(HSM)



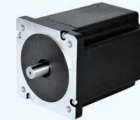
57 HSD(HSM)



86HSD(HYD)



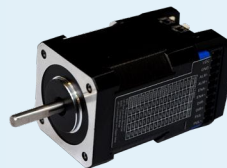
90 HSD



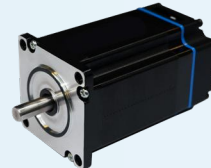
Integrated Stepper Motors

Stepper Motor + Driver + Encoder
Pulse&Direction or CW+CCW control
Max 3.5N.m
Closed loop, MODBUS 485

ICL42



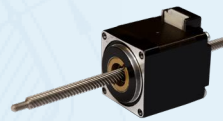
ICL57



Stepper Linear Actuator

NEMA 8 - NEMA34
Speed thrust curves

Non-captive



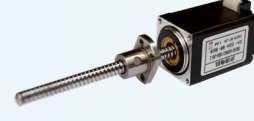
External



Captive



Ball screw



PRODUCT MENU - BLDC MOTOR

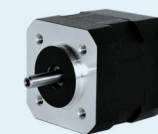
BLDC Motor

NEMA 11 ~ NEMA 52

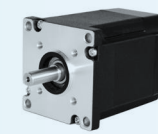
33BYA



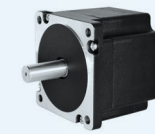
42BSA



57BSA



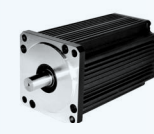
86BSA



110BSA



130BSA



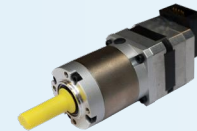
BLDC Geared Motor

NEMA17 ~ NEMA 36
Planetary gearbox
Flange customized

42BYA



42BSF



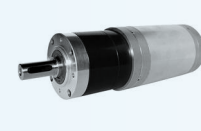
57BYA



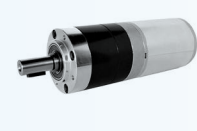
57BYF



86BYA



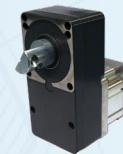
90BYA



BLDC Spur Geared Motor

NEMA 24 ~ NEMA34
Spur geared motor

80BSD



86BSA



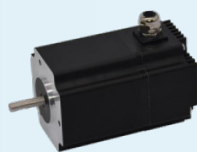
PRODUCT MENU - BLDC MOTOR

Integrated BLDC Motor

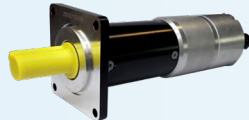
Motor + Driver + Encoder
Open/closed Loop
RS 485



60Series



80Series



90Series



BLDC Drum Motor

Size 50mm ~ 80mm
Direct built-in driver
Magnetic encoder
Hall sensor

50BWA



67BWA



80BWA



Out Rotor Frameless Motor

High process performance
Low noise
Low cogging torque

47Series



120Series



PRODUCT MENU - SERVO MOTOR

Servo Motor

NEMA 16 ~ NEMA 57
48 VDC/220 VAC

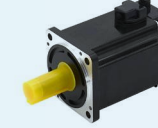
40SB



60SB



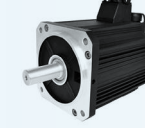
80SB



110SC



130SM



142SA



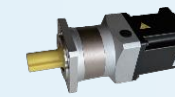
Geared Servo Motor

Servo motor +
High precision gearbox

40S



60S



PRODUCT MENU - DC BRUSHED MOTOR

Brushed DC Motor

Size 63mm ~ 100mm
Flange customized

63ZYT



73ZYT



90ZYT



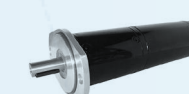
Brushed Gear Motor

Planetary gearbox
Output torque:
120N.m ~ 500 N.m
IP65

PG63



PG80



PG90

